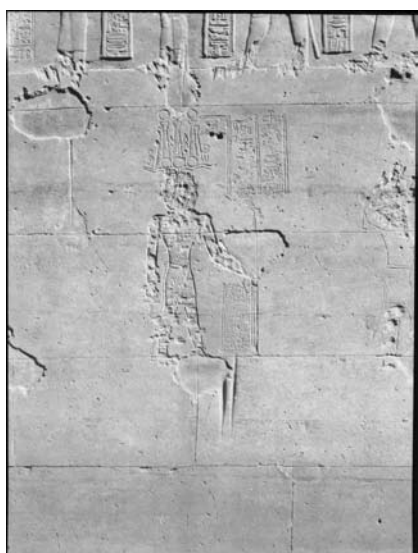




Heathcote_02_101#6000.tif



Heathcote_02_102#6000.tif



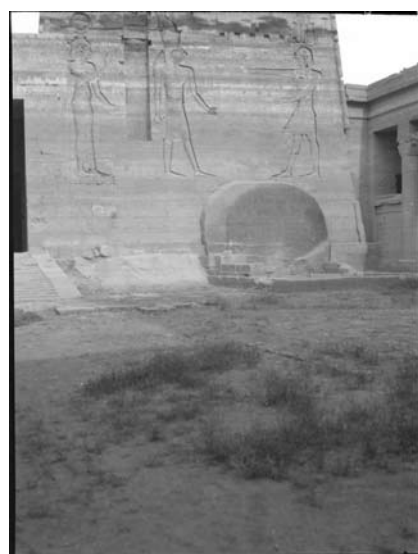
Heathcote_02_103#6000.tif



Heathcote_02_104#6000.tif



Heathcote_02_105#6000.tif



Heathcote_02_106#6000.tif



Heathcote_02_107#6000.tif



Heathcote_02_108#6000.tif



Heathcote_02_109#6000.tif



Heathcote_02_110#6000.tif



Heathcote_02_111#6000.tif



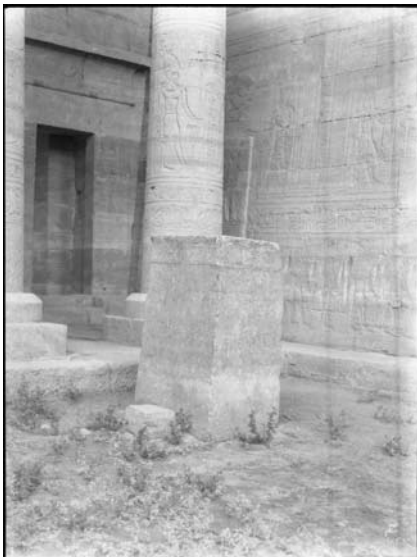
Heathcote_02_112#6000.tif



Heathcote_02_113#6000.tif



Heathcote_02_114#6000.tif



Heathcote_02_115#6000.tif



Heathcote_02_116#6000.tif



Heathcote_02_117#6000.tif



Heathcote_02_118#6000.tif



Heathcote_02_119#6000.tif



Heathcote_02_120#6000.tif



Heathcote_02_121#6000.tif



Heathcote_02_122#6000.tif



Heathcote_02_123#6000.tif



Heathcote_02_124#6000.tif



Heathcote_02_125#6000.tif



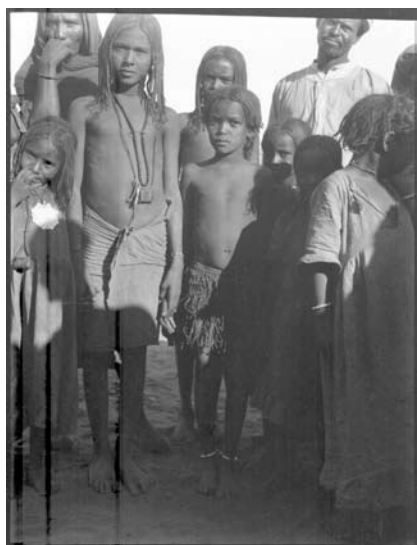
Heathcote_02_126#6000.tif



Heathcote_02_127#6000.tif



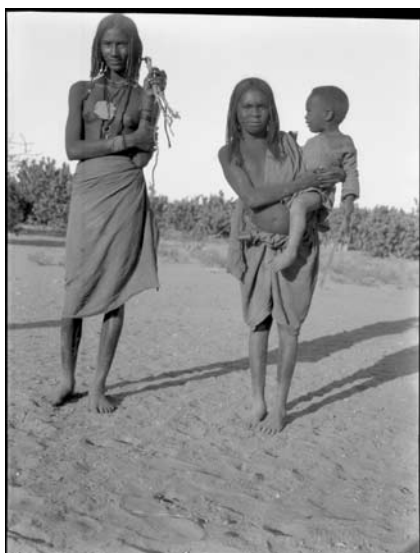
Heathcote_02_128#6000.tif



Heathcote_02_129#6000.tif



Heathcote_02_130#6000.tif



Heathcote_02_131#6000.tif



Heathcote_02_132#6000.tif



Heathcote_02_133#6000.tif



Heathcote_02_134#6000.tif



Heathcote_02_135#6000.tif



Heathcote_02_136#6000.tif



Heathcote_02_138#6000.tif



Heathcote_02_139#6000.tif



Heathcote_02_140#6000.tif



Heathcote_02_144#6000.tif



Heathcote_02_145#6000.tif



Heathcote_02_146#6000.tif



Heathcote_02_147#6000.tif



Heathcote_02_148#6000.tif



Heathcote_02_149#6000.tif



Heathcote_02_150#6000.tif



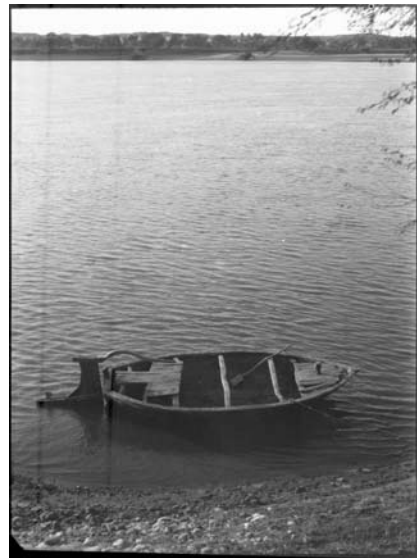
Heathcote_02_151#6000.tif



Heathcote_02_152#6000.tif



Heathcote_02_153#6000.tif



Heathcote_02_154#6000.tif



Heathcote_02_155#6000.tif



Heathcote_02_156#6000.tif



Heathcote_02_157#6000.tif



Heathcote_02_159#6000.tif



Heathcote_02_160#6000.tif



Heathcote_02_161#6000.tif



Heathcote_02_162#6000.tif



Heathcote_02_164#6000.tif



Heathcote_02_165#6000.tif



Heathcote_02_166#6000.tif



Heathcote_02_167#6000.tif



Heathcote_02_169#6000.tif



Heathcote_02_170#6000.tif



Heathcote_02_171#6000.tif



Heathcote_02_172#6000.tif



Heathcote_02_173#6000.tif



Heathcote_02_174#6000.tif



Heathcote_02_175#6000.tif



Heathcote_02_176#6000.tif



Heathcote_02_177#6000.tif



Heathcote_02_178#6000.tif



Heathcote_02_179#6000.tif



Heathcote_02_180#6000.tif



Heathcote_02_181#6000.tif



Heathcote_02_182#6000.tif



Heathcote_02_183#6000.tif



Heathcote_02_184#6000.tif



Heathcote_02_185#6000.tif



Heathcote_02_186#6000.tif



Heathcote_02_187#6000.tif



Heathcote_02_188#6000.tif



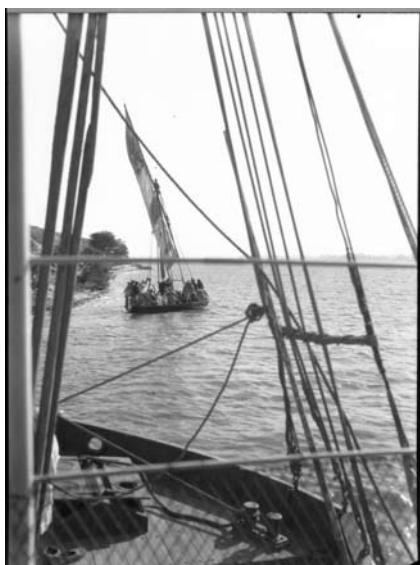
Heathcote_02_189#6000.tif



Heathcote_02_190#6000.tif



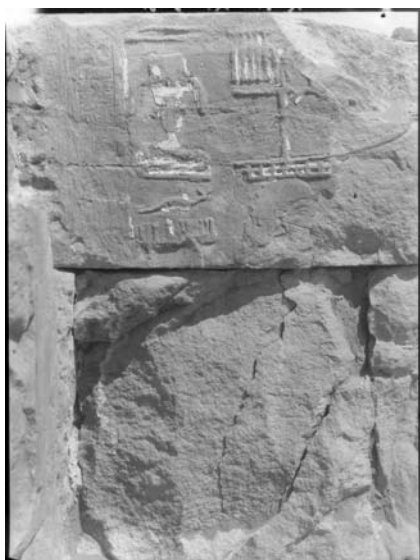
Heathcote_02_191#6000.tif



Heathcote_02_192#6000.tif



Heathcote_02_193#6000.tif



Heathcote_02_194#6000.tif



Heathcote_02_195#6000.tif



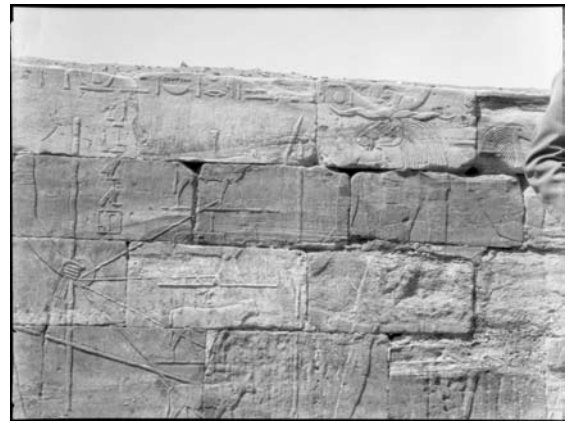
Heathcote_02_196#6000.tif



Heathcote_02_197#6000.tif



Heathcote_02_198#6000.tif



Heathcote_02_199#6000.tif



Heathcote_02_200#6000.tif

NO. OF NEGATIVE	SUBJECT	FILE
101=(1) 4	Granite Stand (Tahadeah) from S. E.	1
102=(1) 5	Small church from S. W.	2
103=(1) 6	Pyramidal, Arabian Gate	3
104=(1) 7	"Pile", Arabian Gate	4
105=(1) 8	"I. 10 = "	5
106=(1) 9	Granite slab E. face of 2 nd Pylon.	6
107=(1) 10	Pyramidal temple from W. colonnade.	7
108=(1) 11	S. end of E. colonnade with unfinished columns.	8
109=(1) 12	Pylons & part of kiosks from south S. E. end of Philae	9
110=(1) 13	Philae from side of S. E. end.	10
111=(1) 14	Other half of island no. 110.	11
112=(1) 15	Corso in front of 1 st Pylon.	12
113=(1) 16	S. end of E. colonnade with unfinished capitals.	13
114=(1) 17	Nestuntho temple from W. colonnade.	14
115=(1) 18	Red granite S. end of Stand, in S. E. corner of ground	15
116=(1) 19	E. colonnade of Sixth house.	16
117=(1) 20	Sculpture on N. wall Sixth house roof tank	17
118=(1) 21	Y. M. deck of house, 28. 11. 29.	18
119=(1) 22	Philae temple's east side of 2 nd pylon, 28. 11. 29.	19
120=(1) 23	Philae with "Yona" below it, 28. 11. 29.	20
121=(1) 24	S. end of Philae with rock, 28. 11. 29.	21
122=(1) 25	Philae from the south, 28. 11. 29.	22
123=(1) 26	Medicinal "Saba" from deck of British museum.	23
124=(1) 27	Scene from Riv. Station between Khartoum & Bahari.	24
125=(1) 28	N. in "Mittelhind", field Bahari in distance	25

Heathcote_02_Index_p1#6000.tif

NO. OF NEGATIVE	SUBJECT	FILE
126=(1) 6	Inhabitants of Abu Dorn, near Gyrene	26
127=(1) 7	"	27
128=(1) 8	"	28
129=(1) 9	"	29
130=(1) 10	Woman driving, Abu Dorn road.	30
131=(1) 11	Same with? Well woman like Amaluk 5/12	31
132=(1) 12	Cemetery at Bahari with "fests"	32
133=(1) 13	Gyrene at Bahari with Gyrene to left.	33
134=(1) 14	View in village of Gyrene	34
135=(1) 15	Interior of Gyrene, Gyrene.	35
136=(1) 16	N. side of Gyrene, Gyrene.	36
137=(1) 17	Gyrene at Bahari, Gyrene to right.	37
138=(1) 18	Two children near Abu Dorn	38
139=(1) 19	Back view of same children.	39
140=(1) 20	"M." in water basin, 27. 11. 20. (1/20/11)	40
141=(1) 21	"	41
142=(1) 22	Medallion in Gyrene Gyrene (Bahari)	42
143=(1) 23	"	43
144=(1) 24	"	44
145=(1) 25	Room of house at 2 nd Temple Bahari.	45
146=(1) 26	Granite table with inscription of Ptolemy Bahari.	46
147=(1) 27	2 nd Temple, Bahari from W.	47
148=(1) 28	North temple of 1 st Bahari, Bahari, from W.	48
149=(1) 29	N. range of P. granite, Bahari Bahari	49
150=(1) 30	S. end of Bahari Bahari.	50

Heathcote_02_Index_p2#6000.tif

NO. OF NEGATIVE	SUBJECT	FILE
151=(1) 31	Boat with oblong sail, 26. 11. 20.	51
152=(1) 32	Woman with baby near Gyrene	52
153=(1) 33	Kanaka & woman near Gyrene.	53
154=(1) 34	Boat with square sail, near Gyrene.	54
155=(1) 35	Field Bahari from near Boat house.	55
156=(1) 36	Ornament & shell at temporary Suez, 28. 11. 29.	56
157=(1) 37	People at temporary Suez, 28. 11. 29.	57
158=(1) 38	Composite photograph of temporary Suez, 28. 11. 29.	58
159=(1) 39	Boat from Port Said, 11. 2. 30.	59
160=(1) 40	Boat - Lily between Khartoum & Bahari, 11. 2. 30.	60
161=(1) 41	Boat with oblong sail, 11. 2. 30.	61
162=(1) 42	"	62
163=(1) 43	Disturb river, field Bahari Church from S.	63
164=(1) 44	Old Bahari Church from S. W.	64
165=(1) 45	Old village & Qulobas behind Old Bahari Church.	65
166=(1) 46	S. W. aspect of Old Bahari Church.	66
167=(1) 47	W. door Old Bahari Church	67
168=(1) 48	The "Strada Parva" (Victoria Column) 3. 2. 30.	68
169=(1) 49	Mountain between Bahari & with child at foot, 5. 2. 30.	69
170=(1) 50	Old Bahari from E. of Cairo Colossus, 5. 2. 30.	70
171=(1) 51	N. Colossus from E. Bahari to land, 5. 2. 30.	71
172=(1) 52	S. Colossus from W.	72
173=(1) 53	Pyramidal structure in corner of S. Colossus, Bahari W.	73
174=(1) 54	Mountain Colossus with 7. Colossus Bahari.	74
175=(1) 55	Meagur at Village of Hays Zuercher, 5. 2. 30.	75

Heathcote_02_Index_p3#6000.tif

NO. OF NEGATIVE	SUBJECT	FILE
176=(1) 7	"	76
177=(1) 8	"	77
178=(1) 9	"	78
179=(1) 10	"	79
180=(1) 11	"	80
181=(1) 12	"	81
182=(1) 13	Workmen at E. end of Bahari temple, Bahari.	82
183=(1) 14	Looking N. along E. end of Bahari temple, Bahari.	83
184=(1) 15	Office from Bahari, in Bahari, Bahari.	84
185=(1) 16	" (badly forwarded)	85
186=(1) 17	" (correctly)	86
187=(1) 18	Old Bahari Bahari, Bahari.	87
188=(1) 19	Tahadeah temple, Bahari, Bahari, 12. 2. 30.	88
189=(1) 20	" S. Colossus before clearing completed	89
190=(1) 21	S. Colossus from E. Tahadeah temple, Bahari	90
191=(1) 22	S. Colossus from W. 12. 2. 30.	91
192=(1) 23	Old Bahari from near in field, 11. 2. 30.	92
193=(1) 24	Old Bahari from old Bahari, 11. 2. 30.	93
194=(1) 25	Old Bahari from old Bahari, Bahari, 11. 2. 30.	94
195=(1) 26	Old Bahari from old Bahari, Bahari, 11. 2. 30.	95
196=(1) 27	" S. end of P. Bahari & from E. (F.)	96
197=(1) 28	" " " " " " " " " " " "	97
198=(1) 29	" " " " " " " " " " " "	98
199=(1) 30	" " " " " " " " " " " "	99
200=(1) 31	" " " " " " " " " " " "	100

Heathcote_02_Index_p4#6000.tif